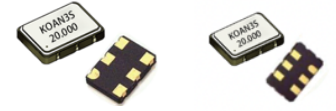


时钟振荡器 Clock Oscillator: KJ326D KJ506D KJ706D

Feature 特征

- Low current consumption 24mA typical at 622.080Mhz @ 3.3V 低功耗设计
- Wide frequency range up to 1.5GHz 频率范围宽, 最高 1.5GHz
- Ultra-low phase jitter 0.6ps RMS (12kHz to 20MHz), ensures clean, high-integrity signals 相位抖动极低, 保证信号清晰可靠
- LVDS differential output, optimized for high-speed, low-noise applications LVDS 差分输出, 适用于高速, 低噪声应用



General Specifications 规格参考

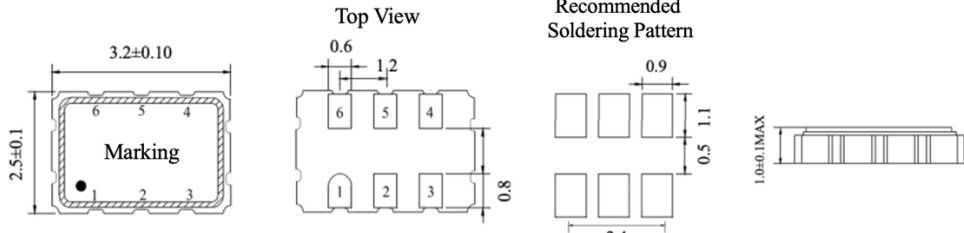
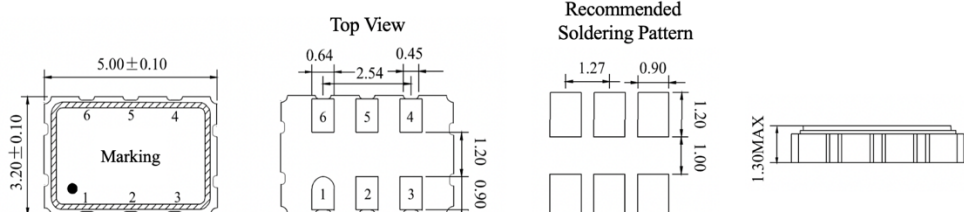
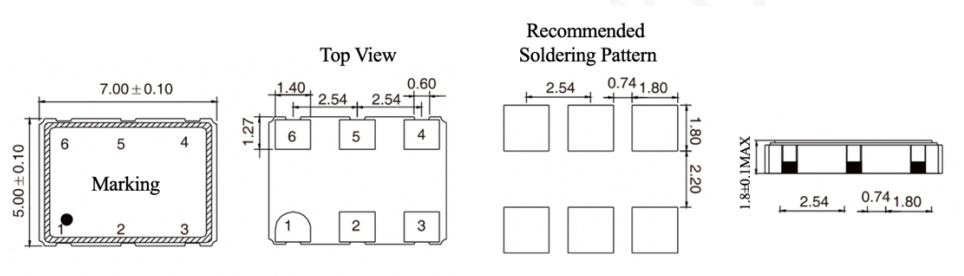
PARAMETER	性能参数	KJ326D KJ506D KJ706D	
Frequency Range	频率范围	100MHz~250MHz	150MHz ~ 1.5GHz
Supply Voltage	供给电压	+2.5V/3.3V (±10%)	
Output Logic	输出波形	LVDS	
Frequency Tolerance	调整频差	±30ppm max	
Frequency Stability	温度频差	见下表	
Operating Temperature Range	温度范围	见下表	
Current Consumption	工作电流	22mA typ.; 30mA max	20~68mA
Output Load	输出负载	100Ω between output and comp. output	
Start-up Time	起振时间	1ms typ.; 5ms max	5ms typ.; 10ms max
Duty Cycle	占空比	45~55%	
Rise & Fall Time	上升下降时间	0.8ns max	
Output Enable/Disable Time	启动/禁用时间	Enable: 10ms max Disable: 0.2μs max	Enable: 200ns max Disable: 50ns max
Output Logic High "1"	输出电平 高	1.4V typ. 1.6V max	
Output Logic Low "0"	输出电平 低	1.1V typ. 0.9V min	
RMS Jitter(12KHz~20MHz)	抖动	50fs typ; 300fs max	0.6ps typ.
Storage Temperature Range	储存温度范围	-55°C ~ +125°C	
Aging Per Year	老化率	±3ppm ~ ±5ppm/year	

Frequency Stability 温度频差 VS Operating Temperature Range 温度范围

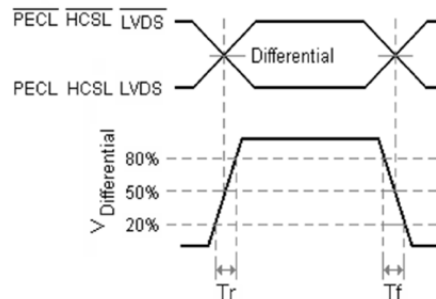
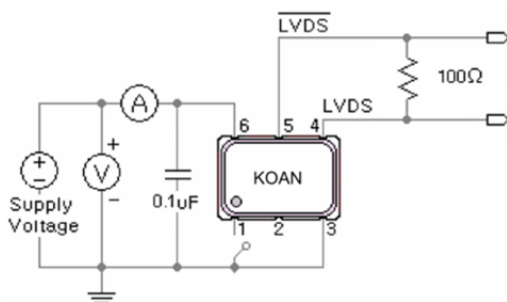
Temp. Code	Temp.\ppm	±10	±20	±30	±50	±100
B	-20~70°C	○	○	○	○	○
C	-40~85°C		○	○	○	○
D	-55~85°C			○	○	○
E	-55~105°C				○	○
F	-55~125°C				○	○

NOTE: Please consult for other specifications 若有其它规格需求请告知

Outline Dimensions (Unit: mm) 外形尺寸

<p>KJ326D</p>																									
<p>KJ506D</p>																									
<p>KJ706D</p>																									
	<table border="1" data-bbox="552 1134 860 1365"> <thead> <tr> <th>Pin</th> <th>Connection</th> </tr> </thead> <tbody> <tr> <td>#1</td> <td>Output Enable (OE)</td> </tr> <tr> <td>#2</td> <td>No Connection</td> </tr> <tr> <td>#3</td> <td>Ground</td> </tr> <tr> <td>#4</td> <td>Output</td> </tr> <tr> <td>#5</td> <td>Complementary</td> </tr> <tr> <td>#6</td> <td>Supply Voltage</td> </tr> </tbody> </table> <table border="1" data-bbox="909 1155 1201 1344"> <thead> <tr> <th colspan="2">Enable/Disable Function</th> </tr> <tr> <th>Input (#1)</th> <th>Output (#4, #5)</th> </tr> </thead> <tbody> <tr> <td>Open</td> <td>Enable</td> </tr> <tr> <td>$V_{IH} \geq 70\%V_{dd}$</td> <td>Enable</td> </tr> <tr> <td>$V_{IL} \leq 30\%V_{dd}$</td> <td>Disable</td> </tr> </tbody> </table>	Pin	Connection	#1	Output Enable (OE)	#2	No Connection	#3	Ground	#4	Output	#5	Complementary	#6	Supply Voltage	Enable/Disable Function		Input (#1)	Output (#4, #5)	Open	Enable	$V_{IH} \geq 70\%V_{dd}$	Enable	$V_{IL} \leq 30\%V_{dd}$	Disable
Pin	Connection																								
#1	Output Enable (OE)																								
#2	No Connection																								
#3	Ground																								
#4	Output																								
#5	Complementary																								
#6	Supply Voltage																								
Enable/Disable Function																									
Input (#1)	Output (#4, #5)																								
Open	Enable																								
$V_{IH} \geq 70\%V_{dd}$	Enable																								
$V_{IL} \leq 30\%V_{dd}$	Disable																								

Test Circuit and Output Waveforms 测试电路图及输出波形

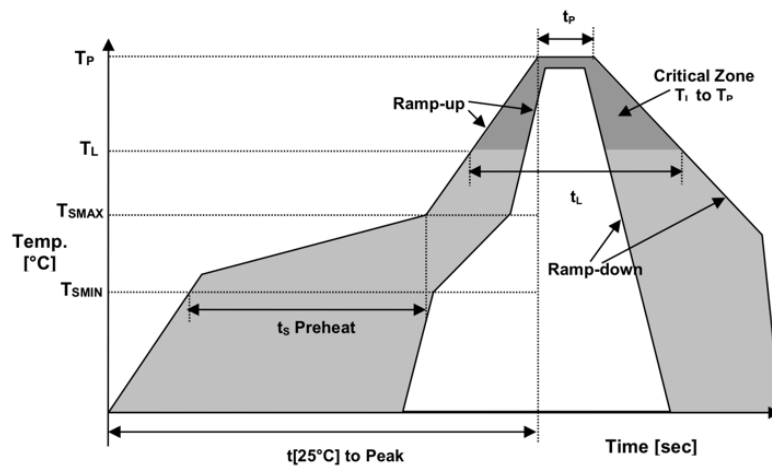


Part Number Guide 产品编号

<u>KJ326D</u>	-	<u>622.080</u>	-	<u>33</u>	-	<u>C</u>	-	<u>30</u>	-	<u>NS</u>
↓		↓		↓		↓		↓		↓
型号	-	标称频率	-	工作电压	-	工作温度	-	温度频差	-	特殊要求

‘KJ’: 低抖动晶振			B: -20~+70°C	10 = ±10ppm	
‘326’: 封装尺寸			C: -40~+85°C	20 = ±20ppm	
SMD 3.2x2.5mm 6 pad	(In MHz)	25=2.5V	D: -55~+85°C	30 = ±30ppm	‘NS’: 特殊要求
‘D’: 输出波形		33=3.3V	E: -55~+105°C	50 = ±50ppm	
LVDS			F: -55~+125°C	100 = ±100ppm	

Reflow Profile 回流焊



Temperature Min Preheat	最低预热温度	T_{smin}	150°C
Temperature Max preheat	最高预热温度	T_{smax}	200°C
Time (T_{smin} to T_{smax})	时间差	T_s	60~120 sec
Temperature	温度	T_L	217°C
Peak Temperature	最高温	T_p	260 °C
Ramp-up Rate	升温速度	R_{up}	3°C/sec max
Ramp-down Rate	降温速度	R_{down}	6°C/sec max
Time within 5°C of Peak Temperature	最高温度停留时间	t_p	30 sec
Time t[25°C] to peak temperature	25度到最高温度时间	t[25°C] to peak	480 sec
Time	时间	t_L	60~150 sec

Revision 版本

版本 Rev.	修改页 Revise Page	修改内容 Revise Contents	日期 Date	修改人 Reviser
0	N/A	Initial issue	2021.12.27	JH
1.0	2	Pin description	2022.06.20	JZ
1.1	1	Specs update	2024.03.19	JZ